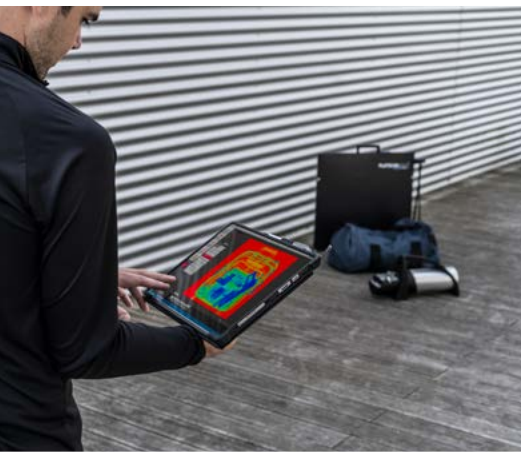


▶ THE ULTIMATE X-RAY SOLUTION



PORTABLE X-RAY SYSTEMS

Fast & Reliable solutions for EOD Operations



TELEDYNE ICM
Everywhereyoulook™

Part of the Teledyne Imaging Group

X-RAY SYSTEMS

X-RAY GENERATOR, DETECTOR, AND SOFTWARE IN ONE BUNDLE!

Discover our complete range of portable X-ray systems for EOD specialists.

Fully developed in-house, these packages combine a detector, an X-ray generator, and Sherlock SEC, a state-of-the-art and user-friendly EOD inspection software

Paired with Teledyne ICM's **CPBattery** X-Ray generators (**CP120B**, **CP160B**, and **LiteX**), the **FLATSCANs** deliver a sharp, clear, and detailed image of any suspicious object, allowing fast and accurate decision makings in time critical moments.

The new **TactX** and **TactXL** detectors complete the **FLATSCAN** series. These high resolution detectors have been specially customized for EOD activities, with reduced dead-zones, improved connectivity features and an enhanced image quality.

Sherlock SEC, Teledyne ICM's brand new EOD inspection software has been developed both with and for EOD operators and is compatible with Teledyne ICM's complete range of portable X-ray systems. This intuitive and user-friendly software can be installed on multiple platforms (tablet, laptop) and manages all aspects of the systems, from the image acquisition and treatment to the wireless or cable connectivity of the different items with each other.

CONNECTIVITY FLATSCAN



CONNECTIVITY TACTX



* If wired, must be connected with Control Box accessory



1

X-RAY GENERATORS : CP120B, CP160B OR LITEX



LIGHT-WEIGHT



BATTERY OPERATED



SMALL FOCAL SPOT

WIRELESS
OR CABLE

UP TO 160 KV



ROTATING TANK

| Features | Unit | CP120B | CP160B | LITEX |
|---|----------|------------------------------|------------------------------|--------------------------------------|
| Radiation geometry | - | Directional | Directional | Directional |
| Output voltage range | kV | 40 to 120 | 40 to 160 | 40 to 120 |
| Tube current range | mA | 0.1 to 1.0 | 0.1 to 0.5 | 0.05 to 0.25 |
| Tube current at full output | mA | 1 | 0.5 | 0.25 |
| Maximum power at the anode | W | 120 | 80 | 30 |
| Constant potential beam | - | Yes | Yes | Yes |
| Weight | kg / lbs | 7.5 / 16.53 | 9.2 / 20.28 | 2.5 / 5.51 |
| Overall dimensions | mm / in | ø 124 x 440 / ø 4.88 x 17.32 | ø 124 x 490 / ø 4.88 x 19.29 | 306 x 126 x 90 / 12.04 x 4.96 x 3.54 |
| Leakage dose at 1m at full output | mSv/h | < 2.0 | < 2.0 | < 2.0 |
| Optical focal spot according to EN12543 | mm | 0.8 x 0.5 | 0.8 x 0.7 | 0.8 x 0.5 |
| Maximum useful angle | ° | 50 x 50 | 60 x 60 | 50 x 50 |
| Inherent filtration | mm | Equiv. 3.5 (Al) | Equiv. 3.5 (Al) | Equiv. 3.5 (Al) |
| Waterproof level | - | IP54 | IP54 | IP54 |
| Operating temperature | °C / F° | -25 to +50 / -13 to +122 | -25 to +50 / -13 to +122 | -25 to +50 / -13 to +122 |
| Storage temperature | °C / F° | -40 to +80 / -40 to +176 | -40 to +80 / -40 to +176 | -40 to +80 / -40 to +176 |
| Low battery level indicator | - | Built-in | Built-in | Built-in |
| ROV compatibility | - | Comp. with major brands | Comp. with major brands | Comp. with major brands |

2

X-RAY DETECTORS : FLATSCAN OR TACTX



USER-FRIENDLY

DEVELOPED WITH
EOD TEAMS

IP 54 / IP 67



ULTRA LIGHT

UP TO 30"
ACTIVE AREA

FAST SET-UP

| Features | Unit | FLATSCAN15XS | FLATSCAN30XS | TACTX | TACTXL |
|-----------------------------|------------------|---|---|---|---|
| Sensor type | - | Linear diode array | Linear diode array | aSi | aSi |
| Resolution | AWG / lp/mm | 40 / 1.25 | 40 / 0.625 | 4.16 | 3.24 |
| Pixel size | µm | 400 | 800/ 400 (optional) | 120 | 154 |
| Dynamic range (Grey levels) | bits | 16 | 16 | 16 | 16 |
| Active area | mm / in diag. | 307 x 230 / 15.1 | 615 x 460 / 30 | 246 x 307 / 15.5 | 434 x 355 / 22 |
| Maximum penetration | | | | | |
| - guaranteed | mm / in of steel | 30 / 1.2 (with CP120B) | 30 / 1.2 (with CP120B) | 30 / 1.2 (with CP120B) | 30 / 1.2 (with CP120B) |
| | mm / in of steel | 40 / 1.6 (with CP160B) | 40 / 1.6 (with CP160B) | 40 / 1.6 (with CP160B) | 40 / 1.6 (with CP160B) |
| - optimized | mm / in of steel | 35 / 1.4 (with CP120B) | 35 / 1.4 (with CP120B) | 35 / 1.4 (with CP120B) | 35 / 1.4 (with CP120B) |
| | mm / in of steel | 45 / 1.8 (with CP160B) | 45 / 1.8 (with CP160B) | 45 / 1.8 (with CP160B) | 45 / 1.8 (with CP160B) |
| Number of covered sides | - | 3 (left, bottom, right) | 3 (left, bottom, right) | 3 (left, bottom, right) | 3 (left, bottom, right) |
| Dead zone | mm / in | 5 / 0.2 (from bottom) | 5 / 0.2 (from bottom) | 4.6 / 0.15 (from bottom) | 4.6 / 0.15 (from bottom) |
| External dimensions | mm / in | 425 x 320 x 25 / 16.3x15.6x 1 | 665 x 628 x 25 / 26.2 x 24.7x 1 | 327.3 x 285.6 x 18.65 / 12.87 x 15.15 x 0.7 | 454 x 387 x 18.65 / 17.87 x 15.24 x 0.7 |
| Weight | kg / lbs | 2.7 / 5.95 | 5.46 / 12.04 | ~2.9 / 6.39 | ~4.3 / ~9.48 |
| Waterproof level | - | IP 54 | IP 54 | IP 67 | IP 67 |
| Operating temperature | °C / °F | -10 to +50 / +14 to +122 | -10 to +50 / +14 to +122 | -20 to +50 / -4 to +122 | -20 to +50 / -4 to +122 |
| Storage temperature | °C / °F | -10 to +65 / +14 to +149 | -10 to +65 / +14 to +149 | -20 to +55 / -4 to +131 | -20 to +55 / -4 to +131 |
| Communication protocols | - | Bluetooth / Wifi or cable driven (optional) | Bluetooth / Wifi or cable driven (optional) | Bluetooth / Wifi or cable driven (optional) | Bluetooth / Wifi or cable driven (optional) |
| Works with | - | CP120B / CP160B/LITEX | CP120B / CP160B/LITEX | CP120B / CP160B/LITEX | CP120B / CP160B/LITEX |
| Compatible Imaging Stations | - | Touchscreen tablet, notebook, toughbook, toughpad | Touchscreen tablet, notebook, toughbook, toughpad | Touchscreen tablet, notebook, toughbook, toughpad | Touchscreen tablet, notebook, toughbook, toughpad |

TOUCHSCREEN
SOFTWARE

PLUG AND PLAY

WIRELESS
OR CABLE

IMAGE EDITING



TELEDYNE FILTER

MATERIAL
DISCRIMINATION

SOFTWARE FEATURES

All-in-one touchscreen software

Available in 20 languages

Add unlimited users

Missions library to store all missions efficiently

Interconnected by cable or wireless

Fast image acquisition for time critical situations

Preset exposure configurations

High Penetration feature

Material discrimination scan (Dual Energy)

Local scan

MULTIPLE IMAGE EDITING FEATURES

Automatic image enhancement filter (magic wand)

ROI (Region of Interest) enhancement

Teledyne filter

Histogram equalization

Emboss (3D)

Black & white

Pseudo-colour filter

Smart measurement tool

Greyscale feature

Annotation / Highlight features

Mirroring / Rotation

Side by side comparison

Multiple images stitching

Easy export/save images

Superpower Zoom (up to 500%)

Detailed Image information tag

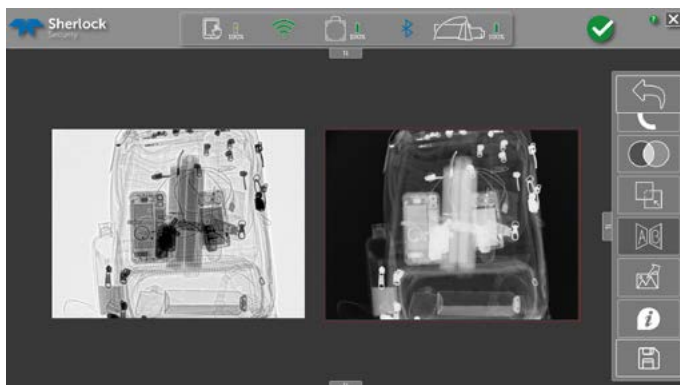


Image enhancement : side by side



Material Discrimination - Dual Energy

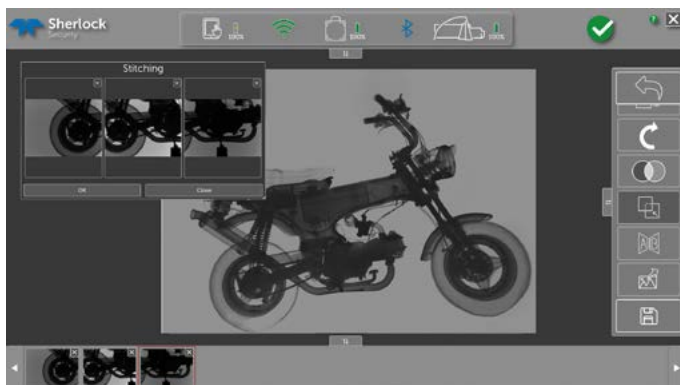


Image enhancement : images stitching

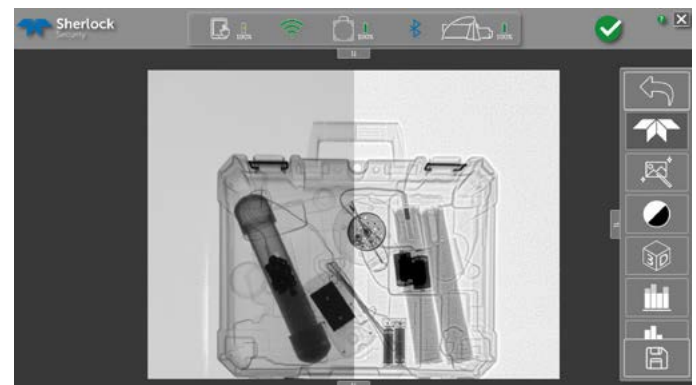


Image enhancement : before/after Teledyne filter application



AVAILABLE ACCESSORIES



TRIPOD



LATERAL FEET



TRANSPORT CASE



**50M CABLE
NETWORK**



PF FILMS 10"X 12"



**FLATSCAN
BATTERY**



DUAL ENERGY



**200M OPTICAL
FIBER**



**BACKPACK FOR
FS15XS + CPB**



**CONTROL BOX FOR
TACTX/TACTXL**



BATTERY FOR CPB



X-RAY APRON



**WLAN REPEATER
FOR FLATSCAN**



**RUGGEDIZED
TABLET**



**PERSONAL
DOSIMETER**



PORTABLE X-RAY SYSTEMS

Fast & Reliable solutions for EOD Operations

All specifications are non contractual and subject to change without prior notice.

SAFETY WARNINGS: The Goods can cause death, personal injury or property damage if they are used, operated, maintained, stored or disposed of improperly. In particular, the Goods may emit x-ray radiation, so adequate safety precautions must be taken to minimize exposure. At a minimum, Buyer should adhere to the ALARA (as low as reasonably achievable) principle and should comply with all applicable regulations relating to protection against x-ray emissions.

TELEDYNE ICM

Zoning Les Plennes / Rue du Progrès 3 / B-4821 Andrimont (Dison) - Belgium
+32 (0)87 44 01 50 / icm.sales@teledyne.com



TELEDYNE ICM
Everywhereyoulook™

Part of the Teledyne Imaging Group