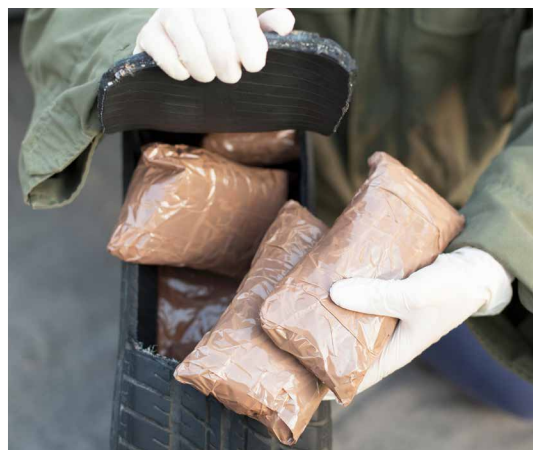
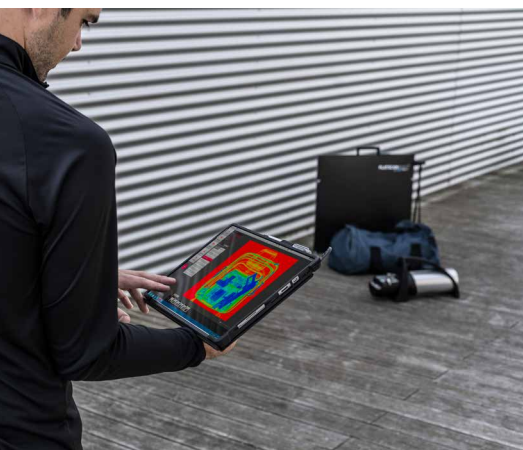


# ▶ THE ULTIMATE X-RAY SOLUTION



## PORTABLE X-RAY SYSTEMS

Fast & Reliable solutions for EOD Operations



**TELEDYNE ICM**  
Everywhereyoulook™

Part of the Teledyne Imaging Group

# X-RAY SYSTEMS

## X-RAY GENERATOR, DETECTOR, AND SOFTWARE IN ONE BUNDLE!

Discover our complete range of portable X-ray systems for EOD specialists.

Fully developed in-house, these packages combine a detector, an X-ray generator, and Sherlock SEC, a state-of-the-art and user-friendly EOD inspection software

Paired with Teledyne ICM's **CPBattery** X-Ray generators (**CP120B**, **CP160B**, and **LiteX**), the **FLATSCANs** deliver a sharp, clear, and detailed image of any suspicious object, allowing fast and accurate decision makings in time critical moments.

The new **TactX** and **TactXL** detectors complete the **FLATSCAN** series. These high resolution detectors have been specially customized for EOD activities, with reduced dead-zones, improved connectivity features and an enhanced image quality.

**Sherlock SEC**, Teledyne ICM's brand new EOD inspection software has been developed both with and for EOD operators and is compatible with Teledyne ICM's complete range of portable X-ray systems. This intuitive and user-friendly software can be installed on multiple platforms (tablet, laptop) and manages all aspects of the systems, from the image acquisition and treatment to the wireless or cable connectivity of the different items with each other.

## CONNECTIVITY FLATSCAN



## CONNECTIVITY TACTX



\* If wired, must be connected with Control Box accessory



## 1

## X-RAY GENERATORS : CP120B, CP160B OR LITEX



LIGHT-WEIGHT



BATTERY OPERATED



SMALL FOCAL SPOT



ROTATING TANK



UP TO 160 KV

Features	Unit	CP120B	CP160B	LITEX
Radiation geometry	-	Directional	Directional	Directional
Output voltage range	kV	40 to 120	40 to 160	40 to 120
Tube current range	mA	0.1 to 1.0	0.1 to 0.5	0.05 to 0.25
Tube current at full output	mA	1	0.5	0.25
Maximum power at the anode	W	120	80	30
Constant potential beam	-	Yes	Yes	Yes
Weight	kg / lbs	7.5 / 16.53	9.2 / 20.28	2.5 / 5.51
Overall dimensions	mm / in	ø 124 x 440 / ø 4.88 x 17.32	ø 124 x 490 / ø 4.88 x 19.29	306 x 126 x 90 / 12.04 x 4.96 x 3.54
Leakage dose at 1m at full output	mSv/h	< 2.0	< 2.0	< 2.0
Optical focal spot according to EN12543	mm	0.8 x 0.5	0.8 x 0.7	0.8 x 0.5
Maximum useful angle	°	50 x 50	60 x 60	50 x 50
Inherent filtration	mm	Equiv. 3.5 (Al)	Equiv. 3.5 (Al)	Equiv. 3.5 (Al)
Waterproof level	-	IP54	IP54	IP54
Operating temperature	°C / °F	-25 to +50 / -13 to +122	-25 to +50 / -13 to +122	-25 to +50 / -13 to +122
Storage temperature	°C / °F	-40 to +80 / -40 to +176	-40 to +80 / -40 to +176	-40 to +80 / -40 to +176
Low battery level indicator	-	Built-in	Built-in	Built-in
ROV compatibility	-	Comp. with major brands	Comp. with major brands	Comp. with major brands

## 2

## X-RAY DETECTORS : FLATSCAN OR TACTX



USER-FRIENDLY

DEVELOPED WITH  
EOD TEAMS

IP 54



ULTRA LIGHT

UP TO 30"  
ACTIVE AREA

FAST SET-UP

Features	Unit	FLATSCAN15XS	FLATSCAN30XS	TACTX	TACTXL
Sensor type	-	Linear diode array	Linear diode array	aSi	aSi
Resolution	AWG / lp/mm	40 / 1.25	40 / 1.25	4.16	3.24
Pixel size	µm	400	800/ 400 (optional)	120	154
Dynamic range (Grey levels)	bits	16	16	16	16
Active area	mm / in diag.	307 x 230 / 15.1	615 x 460 / 30	246 x 307 / 15.5	434 x 355 / 22
Maximum penetration					
- guaranteed	mm / in of steel	30 / 1.2 (with CP120B)	30 / 1.2 (with CP120B)	30 / 1.2 (with CP120B)	30 / 1.2 (with CP120B)
	mm / in of steel	40 / 1.6 (with CP160B)	40 / 1.6 (with CP160B)	40 / 1.6 (with CP160B)	40 / 1.6 (with CP160B)
- optimized	mm / in of steel	35 / 1.4 (with CP120B)	35 / 1.4 (with CP120B)	35 / 1.4 (with CP120B)	35 / 1.4 (with CP120B)
	mm / in of steel	45 / 1.8 (with CP160B)	45 / 1.8 (with CP160B)	45 / 1.8 (with CP160B)	45 / 1.8 (with CP160B)
Number of covered sides	-	3 (left, bottom, right)	3 (left, bottom, right)	3 (left, bottom, right)	3 (left, bottom, right)
Dead zone	mm / in	5 / 0.2 (from bottom)	5 / 0.2 (from bottom)	4.6 / 0.15 (from bottom)	4.6 / 0.15 (from bottom)
External dimensions	mm / in	425 x 320 x 25 / 16.3 x 15.6 x 1	665 x 628 x 25 / 26.2 x 24.7 x 1	327.3 x 285.6 x 18.65 / 12.87 x 15.15 x 0.7	454 x 387 x 18.65 / 17.87 x 15.24 x 0.7
Weight	kg / lbs	2.7 / 5.95	5.46 / 12.04	~2.9 / 6.39	~4.3 / ~9.48
Operating temperature	°C / °F	-10 to +50 / +14 to +122	-10 to +50 / +14 to +122	-20 to +50 / -4 to +122	-20 to +50 / -4 to +122
Storage temperature	°C / °F	-10 to +65 / +14 to +149	-10 to +65 / +14 to +149	-20 to +55 / -4 to +131	-20 to +55 / -4 to +131
Communication protocols	-	Bluetooth / Wifi or cable driven (optional)	Bluetooth / Wifi or cable driven (optional)	Bluetooth / Wifi or cable driven	Bluetooth / Wifi or cable driven
Works with	-	CP120B / CP160B / LITEX	CP120B / CP160B / LITEX	CP120B / CP160B / LITEX	CP120B / CP160B / LITEX
Compatible Imaging Stations	-	Touchscreen tablet, notebook, toughbook, toughpad	Touchscreen tablet, notebook, toughbook, toughpad	Touchscreen tablet, notebook, toughbook, toughpad	Touchscreen tablet, notebook, toughbook, toughpad



## RUGGEDIZED TABLET WITH SHERLOCK SECURITY SOFTWARE



TOUCHSCREEN  
SOFTWARE



PLUG AND PLAY



WIRELESS  
OR CABLE



IMAGE EDITING



TELEDYNE FILTER



MATERIAL  
DISCRIMINATION

### SOFTWARE FEATURES

All-in-one touchscreen software

Available in 20 languages

Add unlimited users

Missions library to store all missions efficiently

Interconnected by cable or wireless

Fast image acquisition for time critical situations

Preset exposure configurations

High Penetration feature

Material discrimination scan (Dual Energy)

Local scan

### MULTIPLE IMAGE EDITING FEATURES

Automatic image enhancement filter (magic wand)

ROI (Region of Interest) enhancement

Teledyne filter

Histogram equalization

Emboss (3D)

Black & white

Pseudo-colour filter

Smart measurement tool

SNR (Signal to Noise) calculator

Greyscale feature

Annotation / Highlight features

Mirroring / Rotation

Side by side comparison

Multiple images stitching

Easy export /save images

Superpower Zoom (up to 500%)

Detailed Image information tag

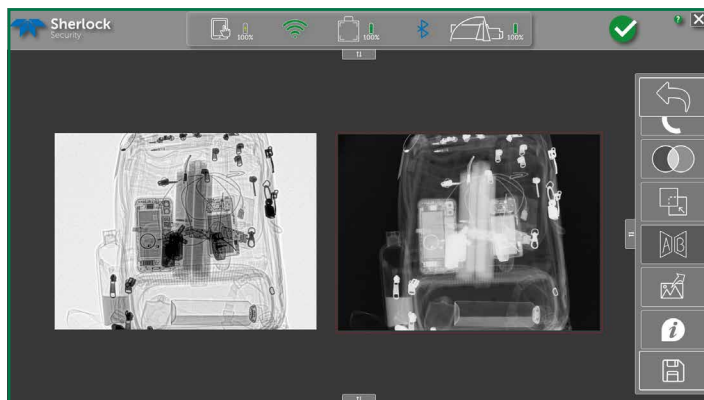
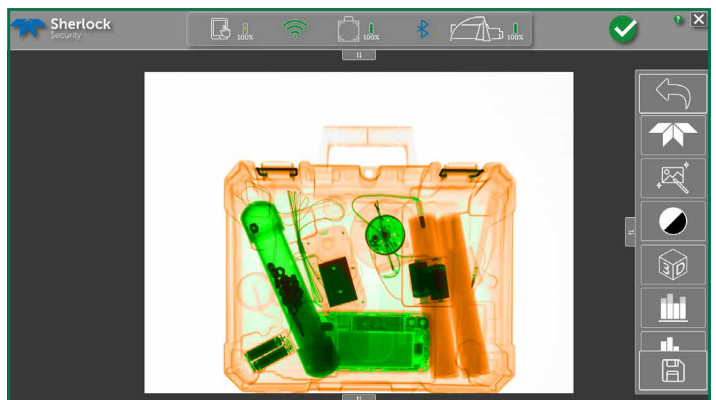


Image enhancement : side by side



Material Discrimination - Dual Energy

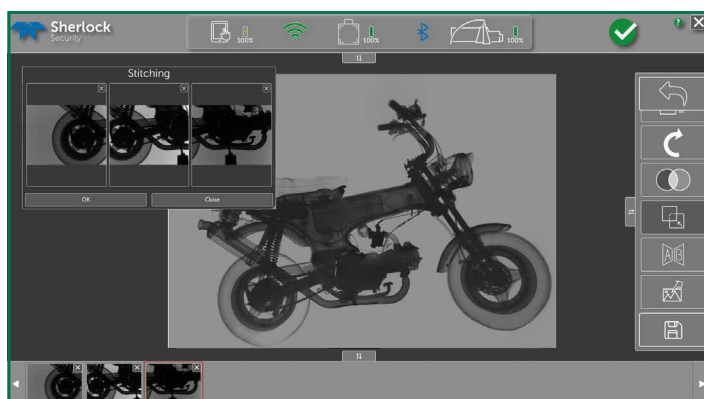


Image enhancement : images stitching

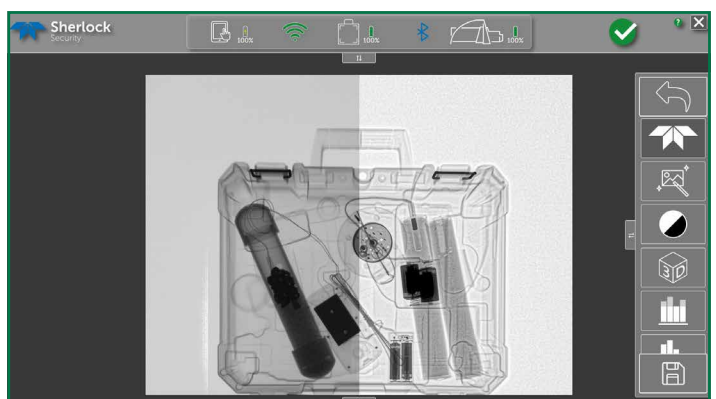


Image enhancement : before/after Teledyne filter application



**TELEDYNE ICM**  
Everywhere you look™  
Part of the Teledyne Imaging Group

AVAILABLE ACCESSORIES



TRIPOD



LATERAL FEET



TRANSPORT CASE



50M CABLE NETWORK



PF FILMS 10"X 12"



FLATSCAN BATTERY



WLAN REPEATER FOR FLATSCAN



DUAL ENERGY



200M OPTICAL FIBER



BACKPACK FOR FS15XS + CPB



CONTROL BOX FOR TACTX/TACTXL



BATTERY FOR CPB



X-RAY APRON



PERSONAL DOSIMETER



RUGGEDIZED LAPTOP



RUGGEDIZED TABLET





# PORTABLE X-RAY SYSTEMS

Fast & Reliable solutions for EOD Operations

All specifications are non contractual and subject to change without prior notice.

**SAFETY WARNINGS.** The Goods can cause death, personal injury or property damage if they are used, operated, maintained, stored or disposed of improperly. In particular, the Goods may emit x-ray radiation, so adequate safety precautions must be taken to minimize exposure. At a minimum, Buyer should adhere to the ALARA (as low as reasonably achievable) principle and should comply with all applicable regulations relating to protection against x-ray emissions.

**TELEDYNE ICM**

Zoning Les Plenesses / Rue Du Progrès 3 / B-4821 Andrimont (Dison) - Belgium  
+32 (0)87 44 01 50 / [icm.sales@teledyne.com](mailto:icm.sales@teledyne.com)



**TELEDYNE ICM**  
Everywhereyoulook™

Part of the Teledyne Imaging Group

01/2021a06/2021